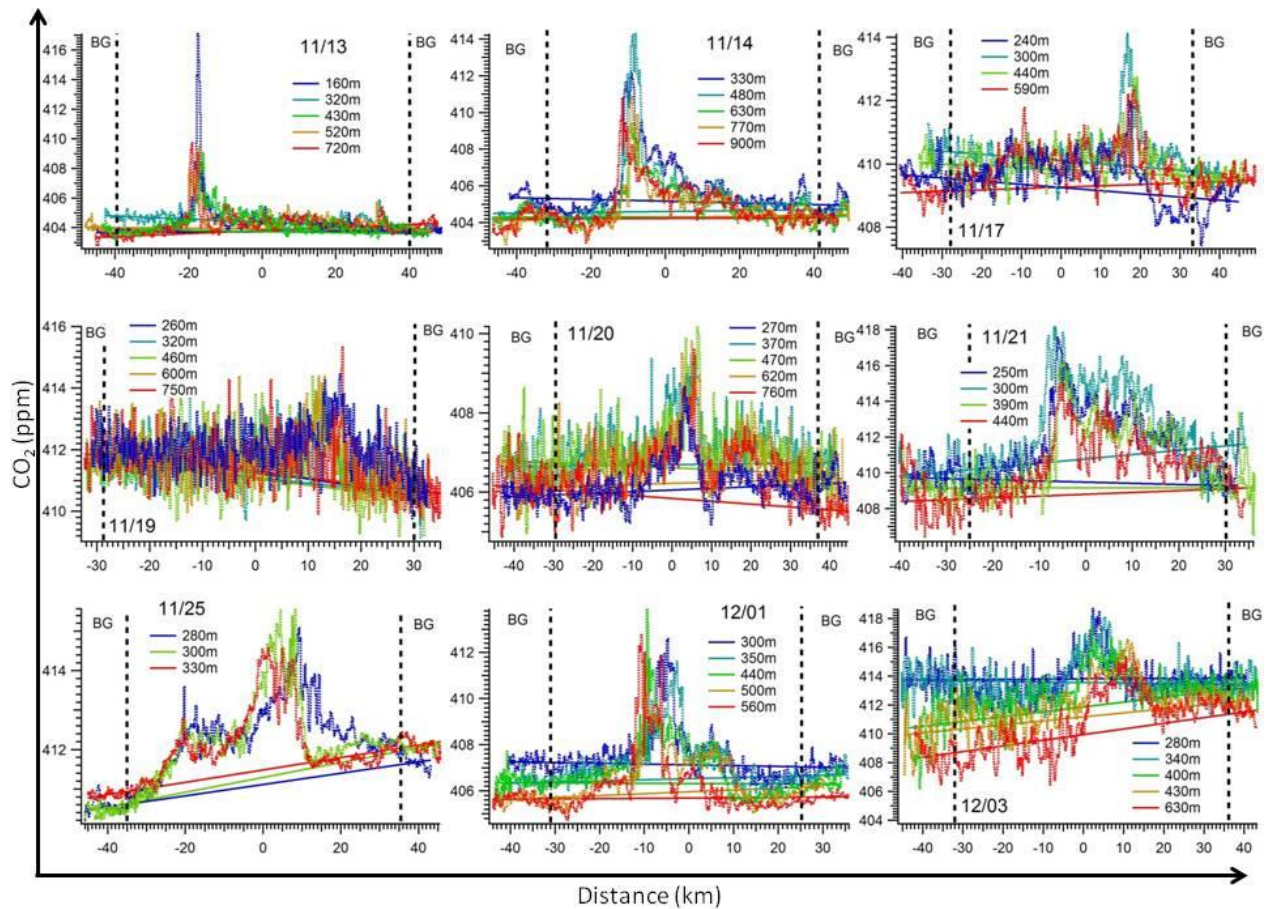


## Supplementary material:

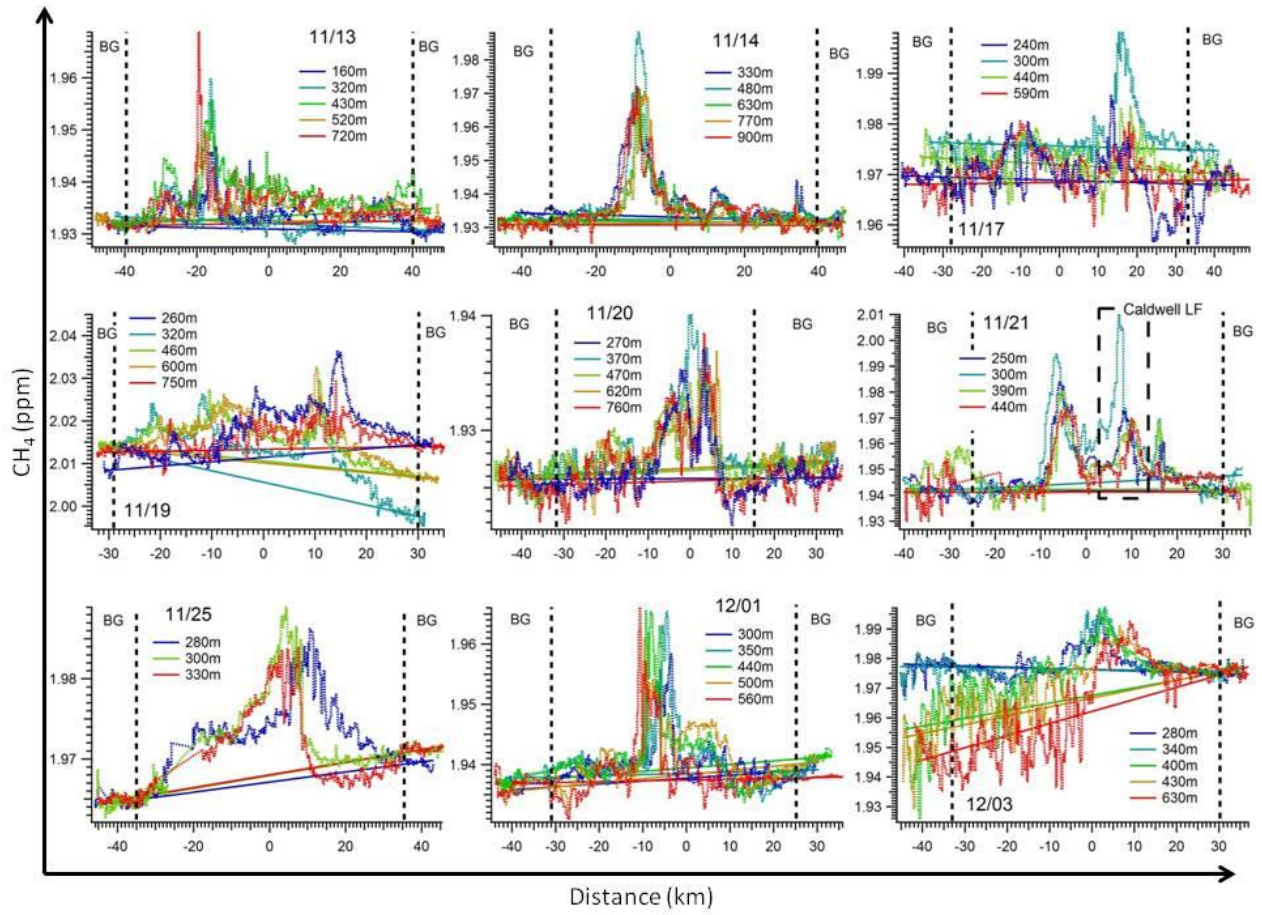
**Figure S5: Downwind CO<sub>2</sub>, CH<sub>4</sub> and CO concentrations as a function of distance**

CO<sub>2</sub> (a), CH<sub>4</sub> (b) and CO (c) concentrations (dark blue, light blue, green, yellow and red dashed lines, y-axis) as a function of horizontal distance (x-axis), where x=0 is the approximate midpoint for the downwind distance. Each downwind transect is colored depending on the altitude (height above ground in m). Concentrations on the edges used to define backgrounds (BG) are delimited by vertical black dashed lines. Linear functions used to calculate background concentrations are represented by solid lines and colored according to their respective downwind transect. Date format is mm/dd.

a)



b)



c)

