

Culturable diversity of Arctic phytoplankton during pack ice melting

Supplementary material

Catherine G erikas Ribeiro^{1,2*}, Adriana Lopes dos Santos^{3,2}, Priscillia Gourvil⁴, Florence Le Gall¹, Dominique Marie¹, Margot Tragin¹, Ian Probert⁴, Daniel Vaultot^{1,3}

¹Sorbonne Universit , CNRS, UMR7144, Team ECOMAP, Station Biologique de Roscoff, Roscoff, France

²GEMA Center for Genomics, Ecology & Environment, Universidad Mayor, Santiago, Chile

³Nanyang Technological University, Asian School of the Environment, Singapore.

⁴Sorbonne Universit , CNRS, FR2424, Roscoff Culture Collection, Station Biologique de Roscoff, Roscoff, France

*catherine.gerikas@gmail.com

Elementa: Science of the Anthropocene

<https://doi.org/10.1525/elementa.401.s1>

Date: February 6, 2020

Supplementary data

Supplementary data are available at:

<https://github.com/vaulot/Paper-2019-Ribeiro-GE-cultures>

Supplementary Data S1: File GE_cultures_Tables.xlsx. Sheet Data S1. Strains collected during the Green Edge campaign, including both *Amundsen* cruise (AM) and ice camp (IC) samples: RCC accession number, taxonomy, respective phylo-type grouping, sampling substrate, depth and date, geographic coordinates, and isolation method.

Supplementary Data S2: File GE_cultures_Tables.xlsx. Sheet Data S2. Best BLAST hit for representative 18S rRNA sequences from each phylotype against all GenBank sequences, PR² sequences and sequences from cultured strains.

Supplementary Figures

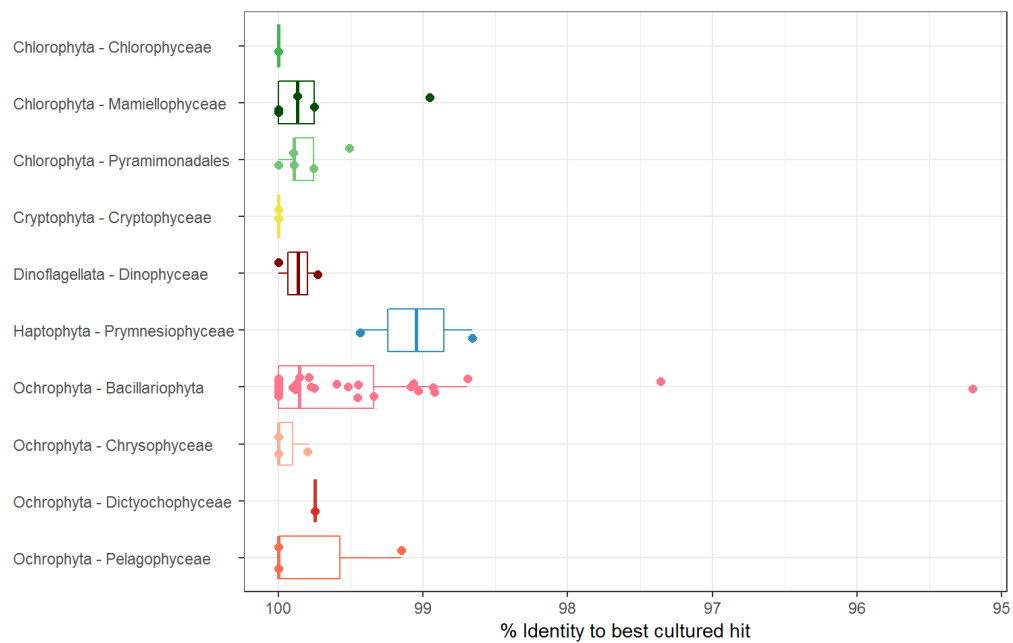


Figure S1. Novelty of phlotypes.

Percentage of similarity of phylotype representative 18S rRNA sequence to best BLAST hit from GenBank (see Supplementary Data S2).

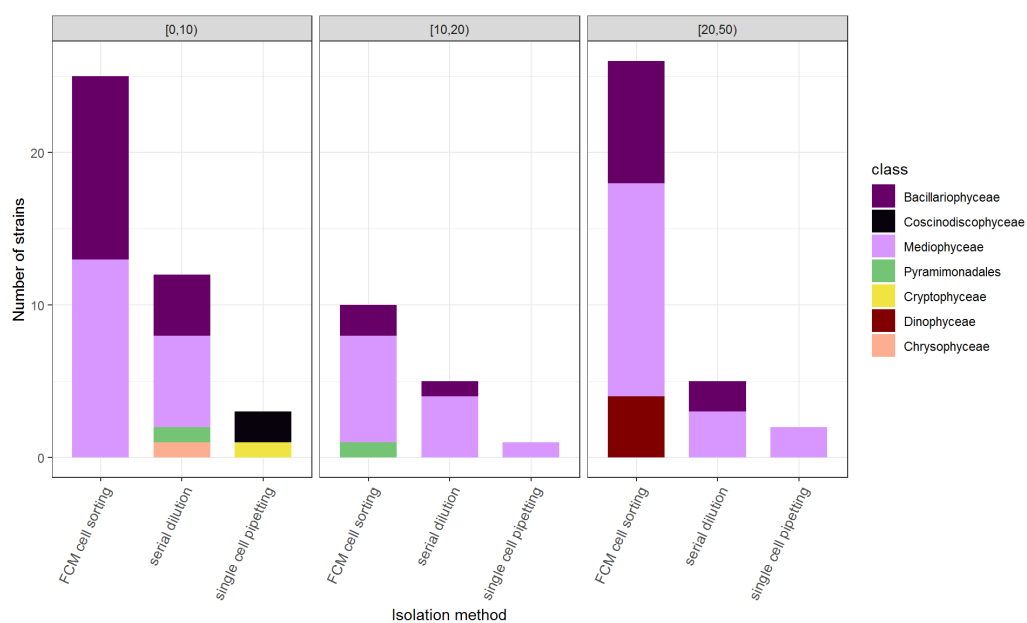


Figure S2. Strains from *Amundsen* cruise as a function of isolation method and depth.

Strain class distribution for the *Amundsen* cruise separated according to the method of isolation (cell sorting, serial dilution and single cell isolation) and sampling depth range (m, m).

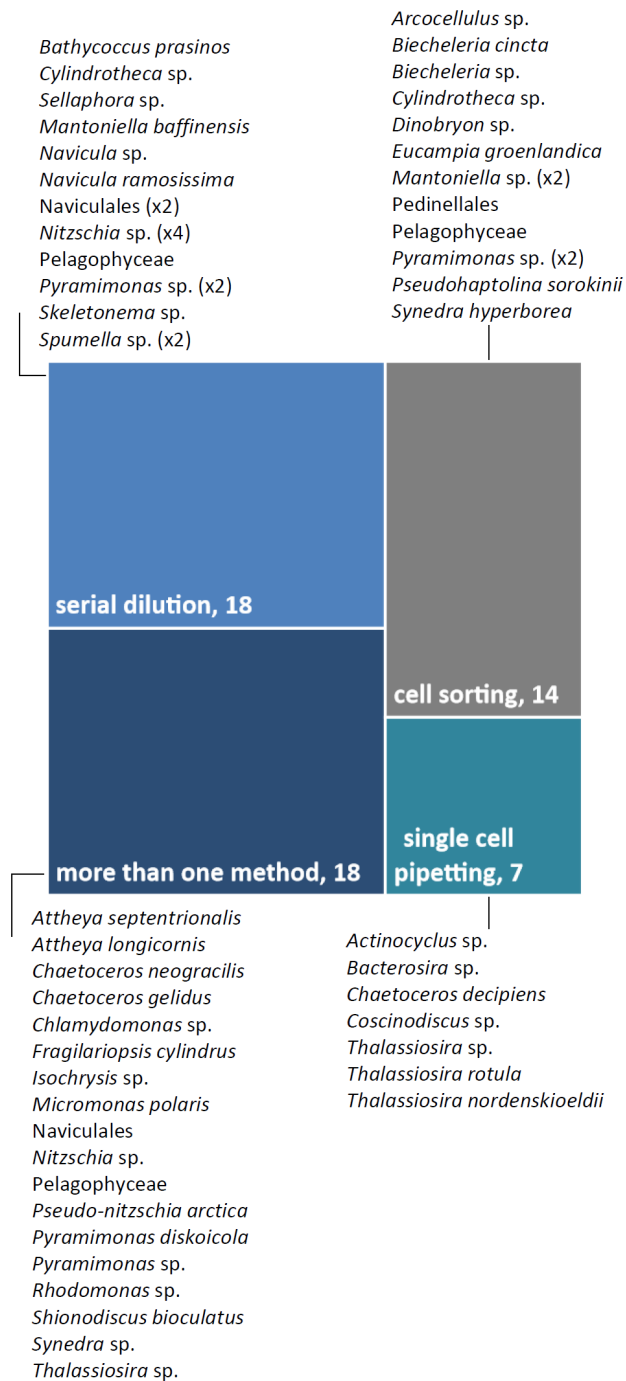


Figure S3. Phylotype as a function of isolation method.

Treemap of the number of strains isolated as function of the isolation method.

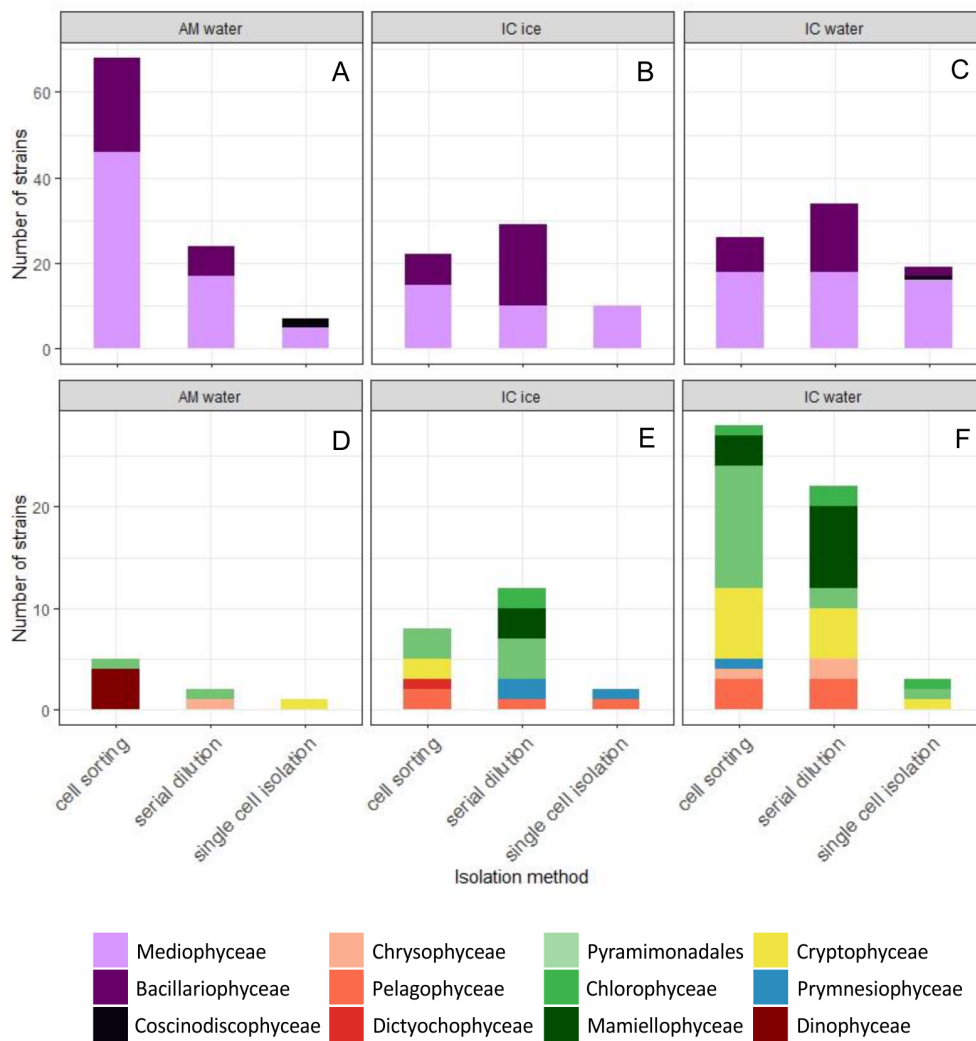


Figure S4. Strains as a function of isolation method and substrate.

Strain class distribution separated according to the method of isolation (cell sorting, serial dilution, and single cell isolation) and sampling substrate: water samples from the *Amundsen* cruise, and water and sea ice samples from the Ice Camp for diatoms (top panels) and non-diatoms (bottom panels).